

Leiðandi
vettvangur í tíu ár



REM and the Value of Catch Identification: Electronic monitoring in Norwegian fisheries

Thord Monsen, Head of Section, Norwegian Directorate of Fisheries



SJÁVARÚTVEGS
RÁÐSTEFNAN

ISI ICELAND
SEAFOOD



HAMPIÐJAN

Hrífa Óhárisd

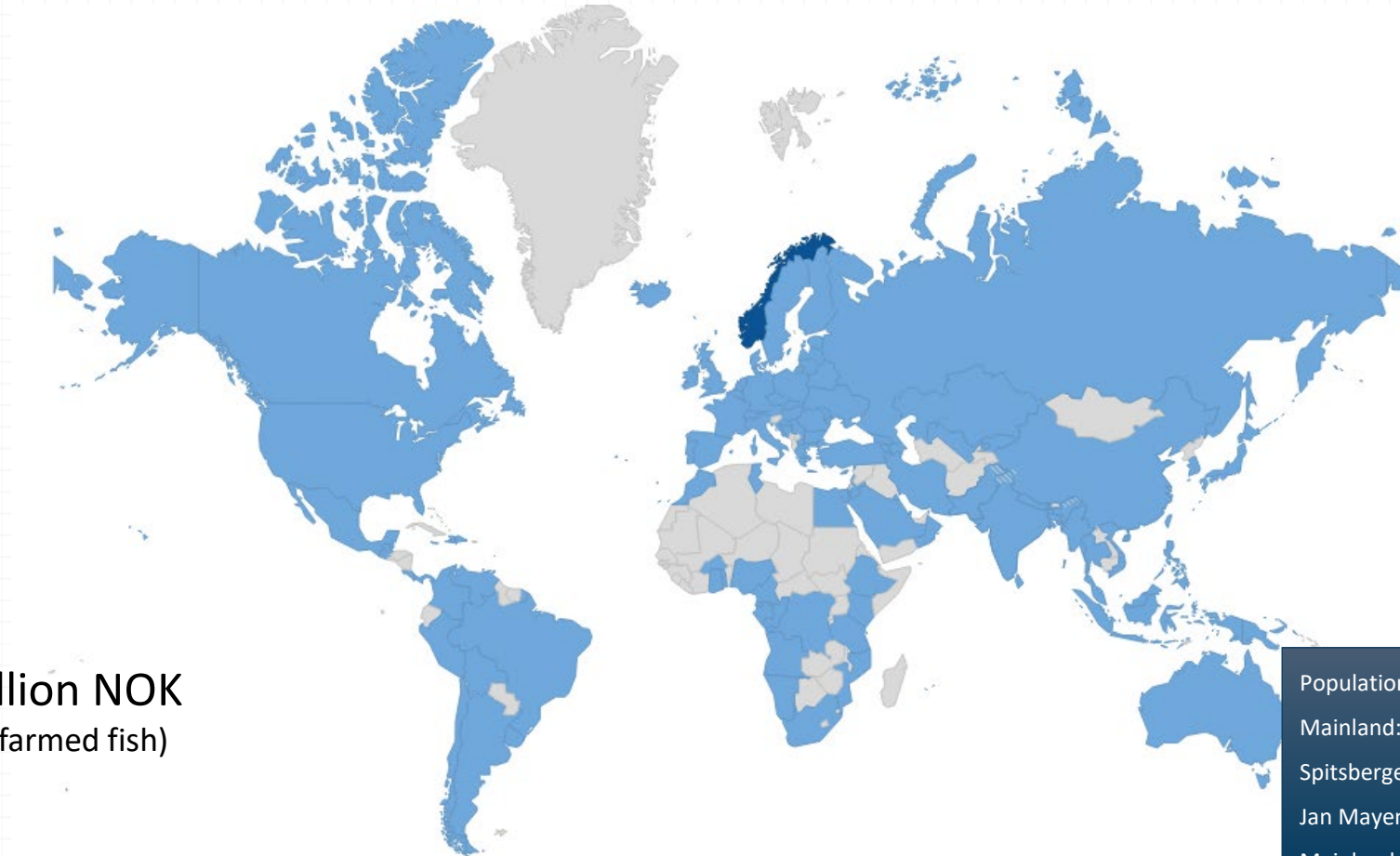


Compliance by design

How can technology improve compliance and increase the value of wild living marine resources?



Norwegian seafood exports



Value 100 billion NOK
(Capture fish and farmed fish)

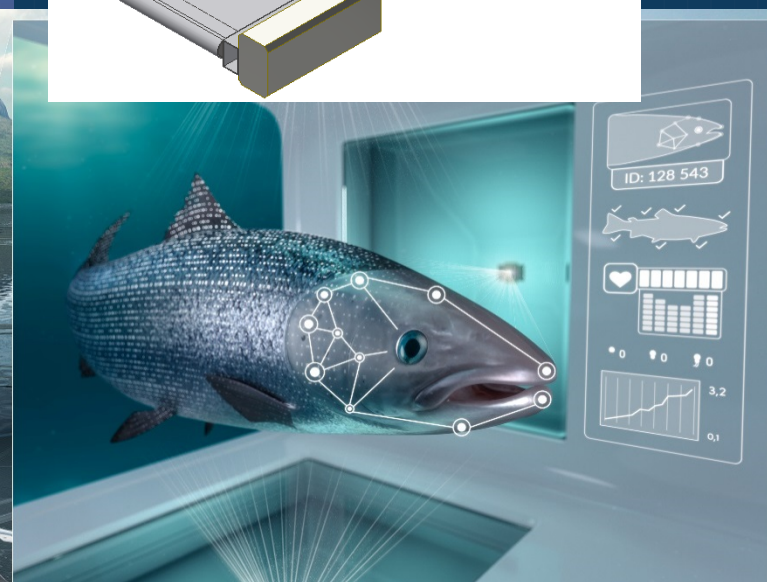
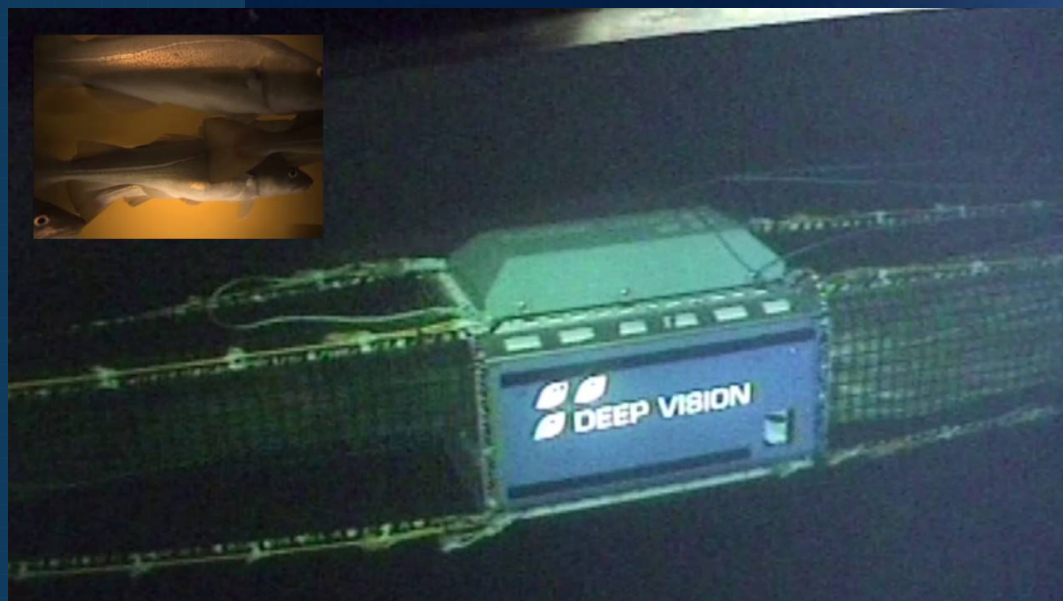
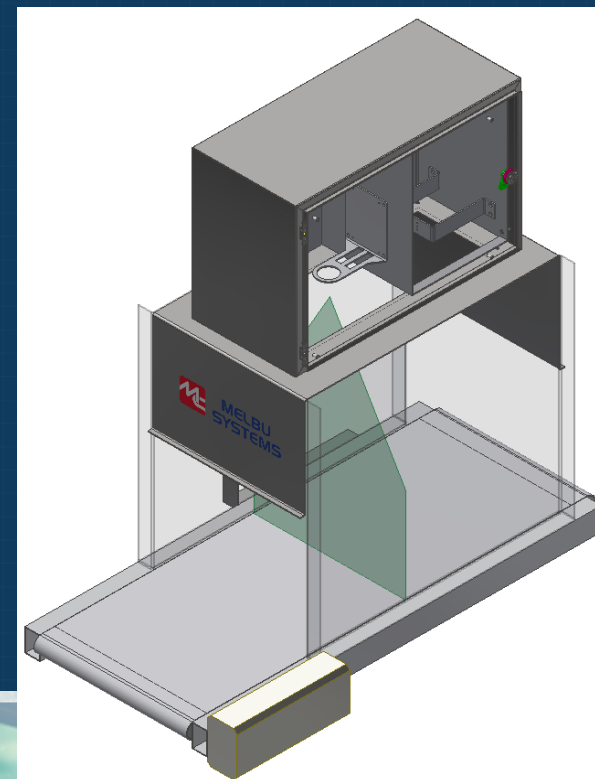
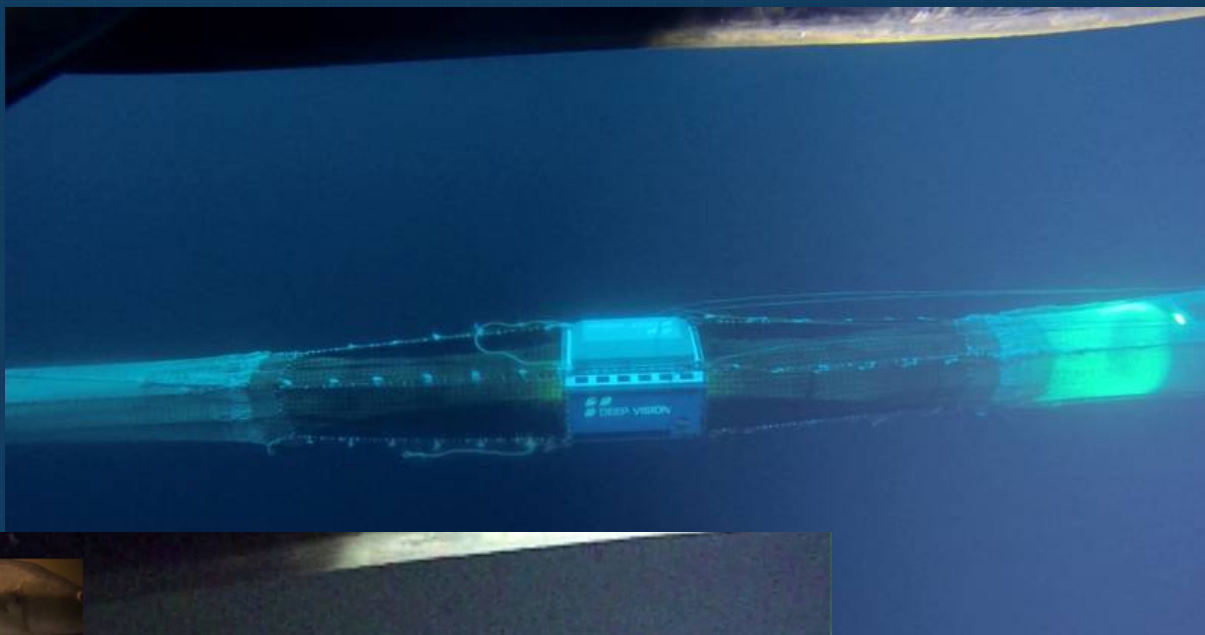
| | |
|--------------------------------------|---------------|
| Population: | 5.2 million |
| Mainland: | 323 787 sq.km |
| Spitsbergen: | 61 022 sq.km |
| Jan Mayen: | 377 sq.km |
| Mainland coastline: | 28 953 km |
| Total coastline (including islands): | 100 915 km |
| Mainland EEZ: | 968 700 sq.km |
| Spitsbergen FPZ: | 804 000 sq.km |
| Jan Mayen FZ: | 296 600 sq.km |

Shit
In
Shit
Out



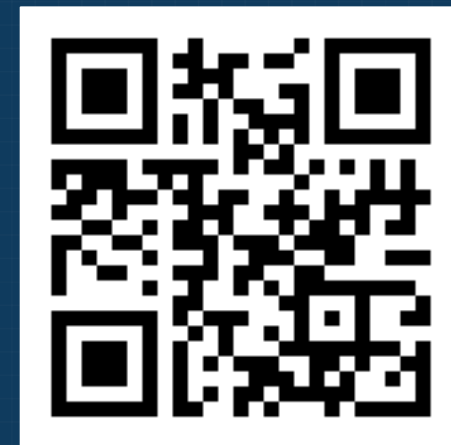
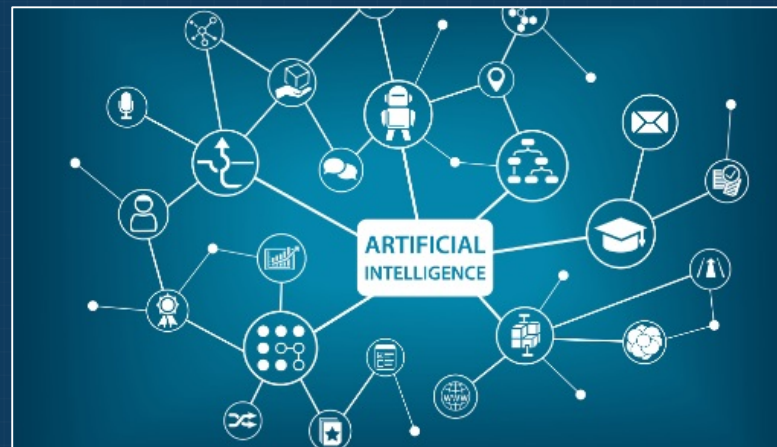
How are your taxes determined?

- Unwilling or unable to cheat?
 - Evidence from a tax audit experiment in Denmark (Et Kleven 2011)
- Third party data
- Third party reporting
- Third party?



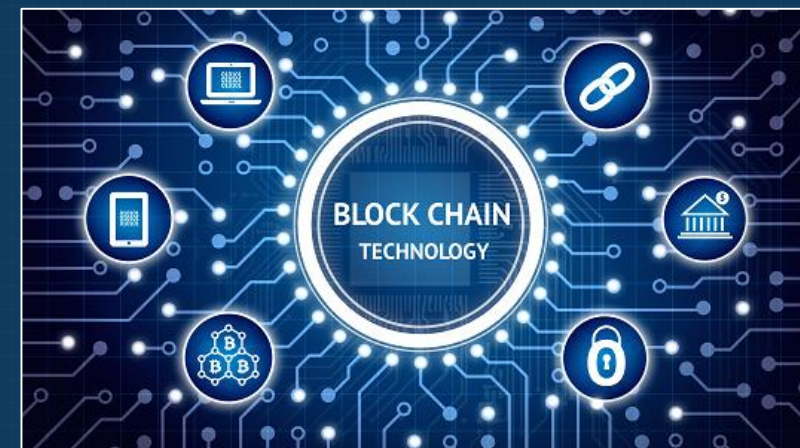
Skat

In



Skript

Out



Thord Monsen

Head of Control (MCS) Section

Directorate of Fisheries, Norway

Thord.monsen@fiskeridir.no

+47 905 92 863

Twitter @ThordMonsen