

Viljum við vistkjöt?

Málþing Matís 31.maí 2024





ISOkine



Háhreinsaðir vaxtarþættir fyrir
vísindafólk í
stofnfrumurannsóknum

2007

DERMOkine



Húðvaxtarþættir fyrir
BIOEFFECT

2009

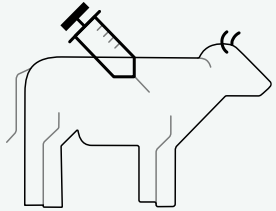


MESOkine

Vaxtarþættir fyrir vistkjötsframleiðendur

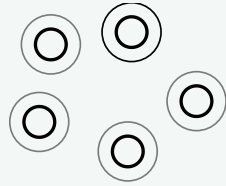
2019

HARVESTING



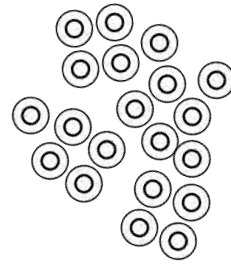
BIOPSY

SORTING

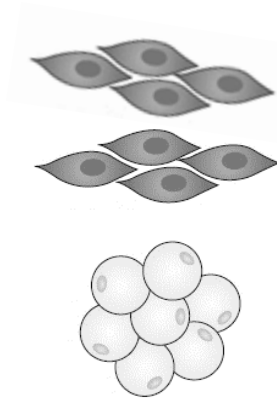


STEM CELLS

PROLIFERATION

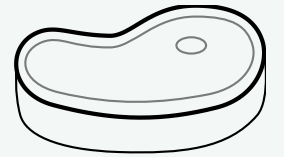


DIFFERENTIATION



MESOkine

PROCESSING



CULTIVATED MEAT

15%

















CANADIAN BEEF GOALS 2030



MAINTAIN THE
35 MILLION
ACRES OF NATIVE GRASSLAND
in the care of beef producers



SUPPORT
INNOVATION, RESEARCH,
AND COMMERCIALIZATION OF
TECHNOLOGY
THROUGHOUT THE SUPPLY CHAIN



INVEST IN
**INNOVATIVE
SOLUTIONS**
FOR A BETTER
TOMORROW



LEADING EXCELLENCE IN
**BEST
PRACTICES**
REGARDING ANTI-MICROBIAL USE



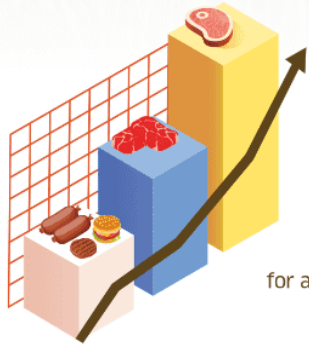
REDUCE FOOD LOSS
AND WASTE BY

50%

from secondary
processing to consumer



SEQUESTER AN
ADDITIONAL
**3.4 MILLION
TONNES**
OF CARBON EVERY YEAR

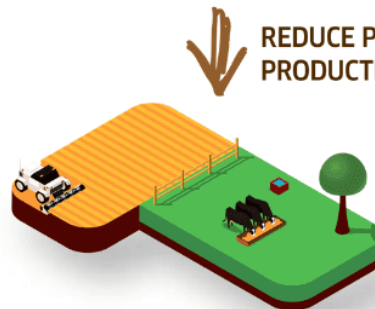


INCREASE THE
VALUE
OF AAA AND
PRIME CARCASSES
by building demand
for all cuts on the carcass



BEEF CATTLE
**GUARDIANS
OF THE
WETLANDS**

- ✓ protect wetlands
- ✓ filter nutrients
- ✓ build resilience to droughts and flooding



REDUCE PRIMARY
PRODUCTION GHG EMISSION
INTENSITY BY

33%

BY 2030



MAINTAIN
& ENHANCE

68%

OF WILDLIFE
HABITAT CAPACITY
within agricultural lands being
supported by beef production



ENSURE THE
FIVE
FREEDOMS OF
ANIMAL WELLBEING



Animal husbandry

Producers using pain relief for animal husbandry procedures has increased to 35%.



Greenhouse gas emissions and capture

The Australian beef industry has continued to reduce its net CO₂e emissions since 2005, recording a reduction of 58.21% in 2019.



Forests, woodlands and grasslands

Native vegetation regrowth has seen the area of forest on Australian grazing properties increase from 12.94% in 2004 to 15.32% in 2020.



Food Waste

2.39 million tonnes of food waste was recovered along the supply chain in 2021, diverting this from landfill.



Processing and stock handling practices

Australian cattle producers continue to demonstrate a high degree of good agricultural practice, with the National Residue Survey recording a 99.6% compliance.



Biodiversity

7.6 million hectares of cattle-producing land – an area larger in size than Ireland – set aside for conservation or protection purposes.



Biosecurity

Australia's robust traceability systems have ensured Australia remains free from exotic diseases, and increases responsiveness to biosecurity threats.



Climate change resilience

Climate adjusted farm productivity has increased, showing producers are adapting to climate change impacts.



Soil health

79.6% of NRM regions achieved healthy groundcover thresholds, further protecting our soils and ecosystem services.

Umhverfisstefna landbúnaðarins

2020 — 2030

Aðgerðir

Aðgerð	Staða	Losunaráhrif 2030
E.1 Loftslagsvænni landbúnaður	Í framkvæmd	<i>Aðgerð í mótun, ekki metin</i>
E.2 Kolefnishlutleysi í nautgripærækt	Í undirbúningi (ný aðgerð)	<i>Aðgerð í mótun, ekki metin</i>
E.3 Aukin innlend grænmetisframleiðsla	Í framkvæmd (ný aðgerð)	<i>Ekki metin að svo stöddu</i>
E.4 Bætt nýting tilbúins áburðar og bætt meðhöndlun húsdýraáburðar	Í undirbúningi	-25 þúsund tonn CO ₂ -ígilda
E.5 Bætt fóðrun búfjár til að draga úr iðragerjun	Í undirbúningi (ný aðgerð)	-23 þúsund tonn CO ₂ -ígilda





Umhverfisstefna landbúnaðarins

2020 — 2030



Takk!

